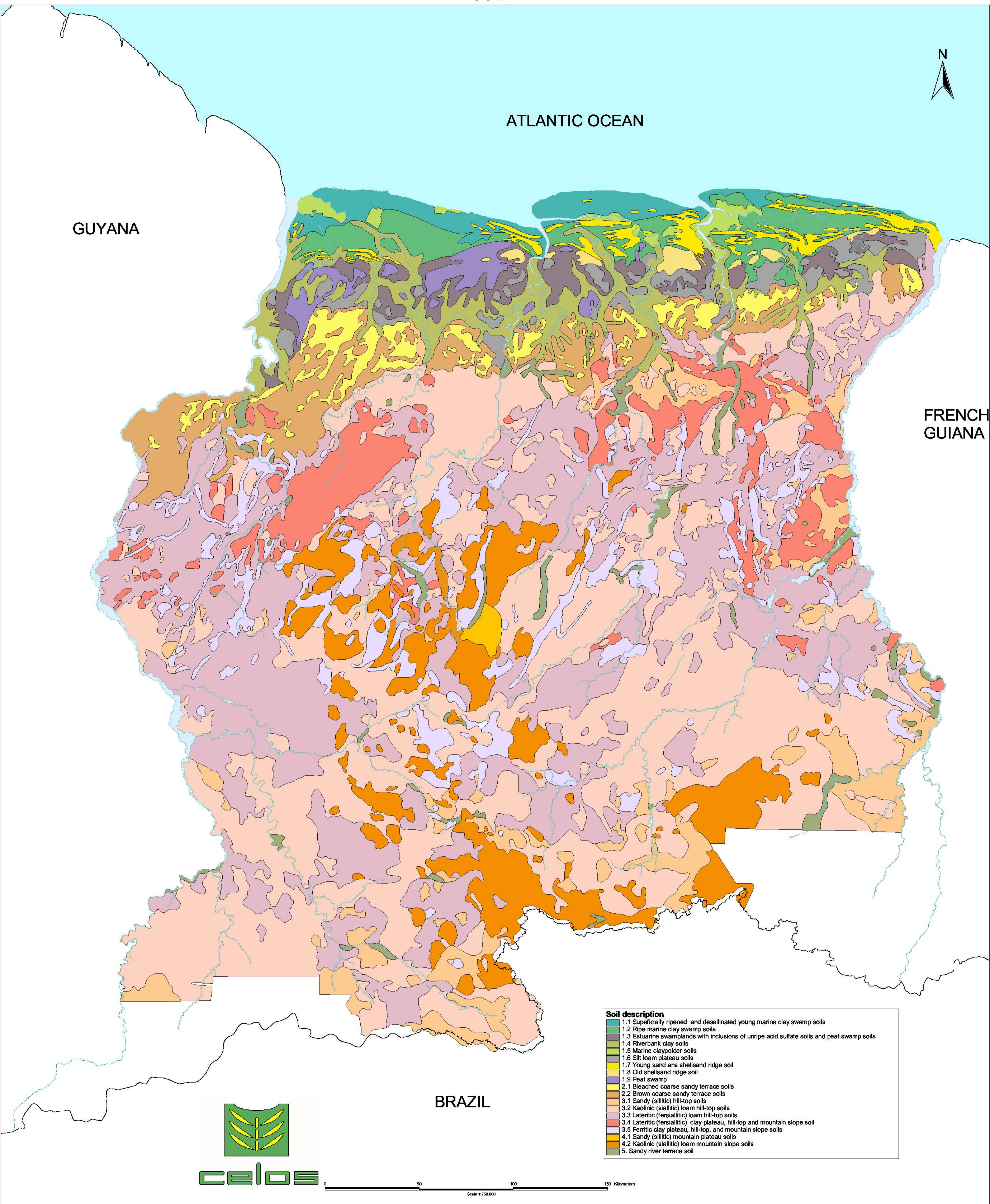


SURINAME SOIL

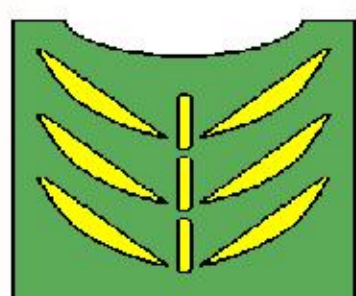


ATLANTIC OCEAN

GUYANA

FRENCH
GUIANA

BRAZIL



celos

0 50 100 150 Kilometers
Scale 1:750 000

Soil description

- 1.1 Superficially ripened and desalinated young marine clay swamp soils
- 1.2 Ripe marine clay swamp soils
- 1.3 Estuarine swamplands with inclusions of unripe acid sulfate soils and peat swamp soils
- 1.4 Riverbank clay soils
- 1.5 Marine claypolder soils
- 1.6 Silt loam plateau soils
- 1.7 Young sand and shellsand ridge soil
- 1.8 Old shellsand ridge soil
- 1.9 Peat swamp
- 2.1 Bleached coarse sandy terrace soils
- 2.2 Brown coarse sandy terrace soils
- 3.1 Sandy (sillic) hill-top soils
- 3.2 Kaolinic (sillic) loam hill-top soils
- 3.3 Lateritic (fersiallitic) loam hill-top soils
- 3.4 Lateritic (fersiallitic) clay plateau, hill-top and mountain slope soil
- 3.5 Ferritic clay plateau, hill-top, and mountain slope soils
- 4.1 Sandy (sillic) mountain plateau soils
- 4.2 Kaolinic (sillic) loam mountain slope soils
- 5. Sandy river terrace soil