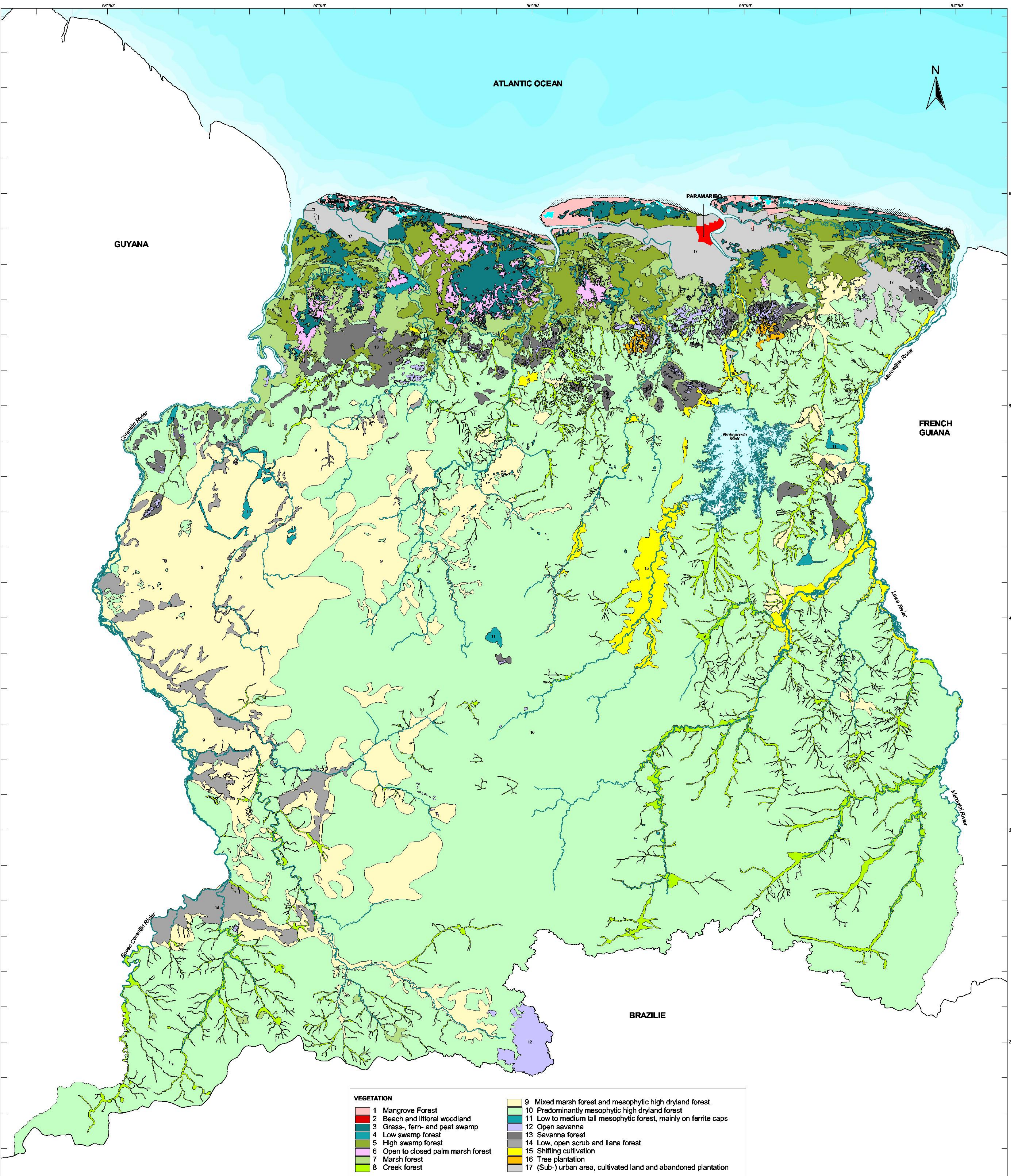


# SURINAME VEGETATION MAP



VEGETATION	
1	Mangrove Forest
2	Beach and littoral woodland
3	Grass-, fern- and peat swamp
4	Low swamp forest
5	High swamp forest
6	Open to closed palm marsh forest
7	Marsh forest
8	Creek forest
9	Mixed marsh forest and mesophytic high dryland forest
10	Predominantly mesophytic high dryland forest
11	Low to medium tall mesophytic forest, mainly on ferrite caps
12	Open savanna
13	Savanna forest
14	Low, open scrub and liana forest
15	Shifting cultivation
16	Tree plantation
17	(Sub-) urban area, cultivated land and abandoned plantation



0 50 100 Kilometers  
Scale 1:750 000



Source: Central Bureau for Aerial Survey (CBI)  
CELLOS, Narena department